



Hyde School  
616 High Street  
Bath, Maine 04530

Be the Best Possible You

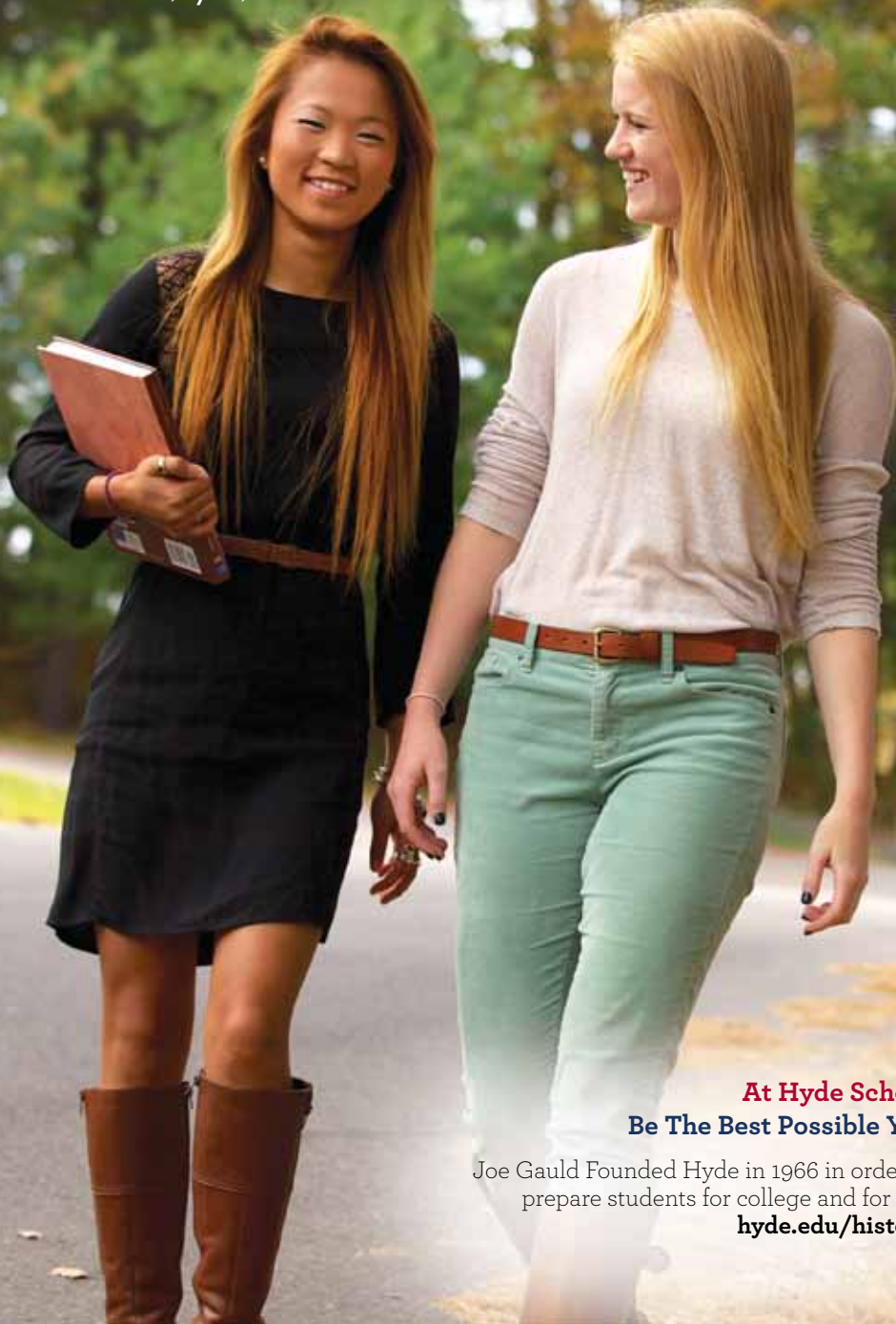
COURAGE INTEGRITY LEADERSHIP CURIOUSITY CONCERN



Be The Best Possible You

“At Hyde I’ve been given the opportunity to grow academically, athletically, and personally, and I’ve also been able to help others along the way.”

— Susanna, Lynn, MA



**At Hyde School**  
**Be The Best Possible You**

Joe Gauld Founded Hyde in 1966 in order to prepare students for college and for life.  
[hyde.edu/history](http://hyde.edu/history)

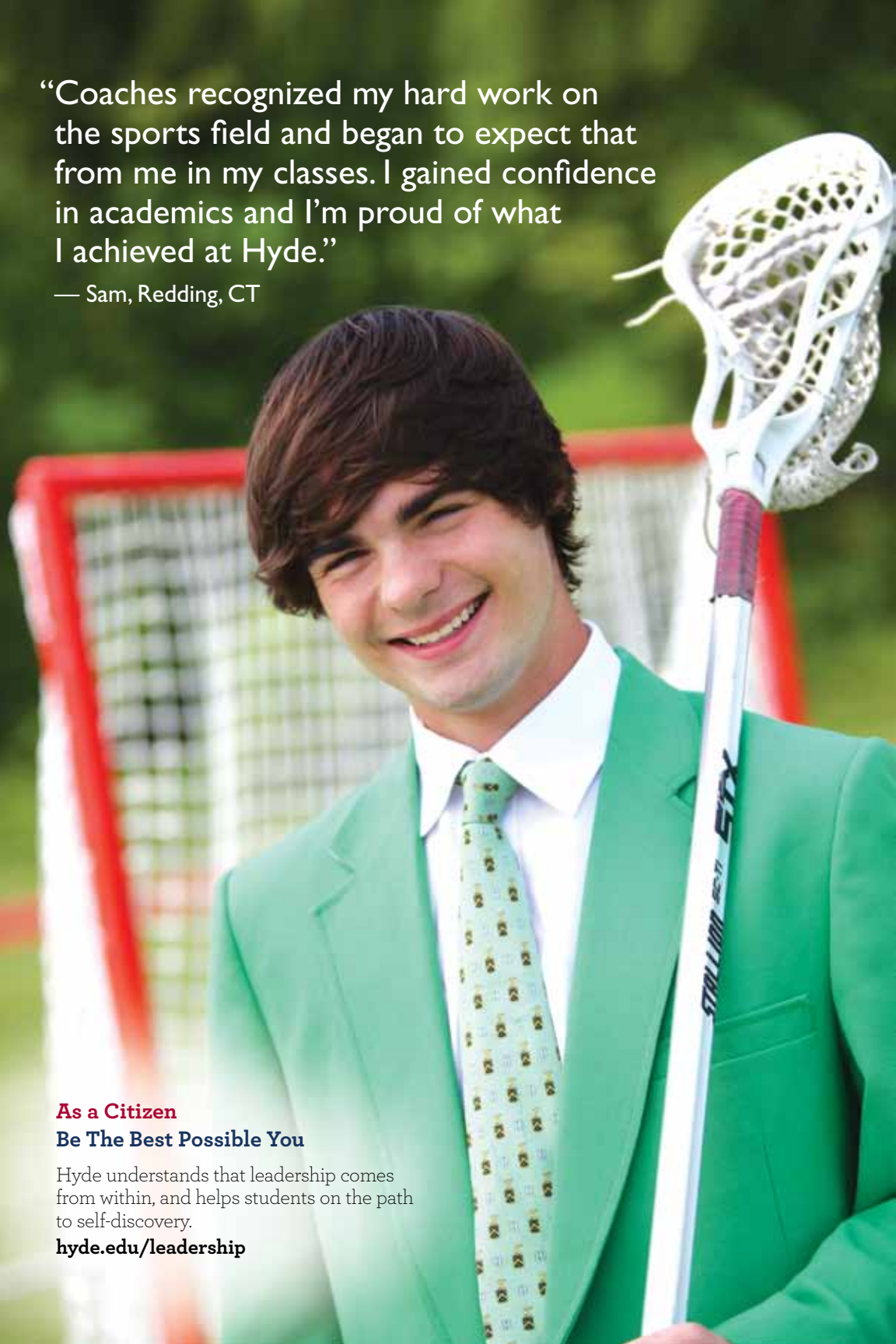
# Welcome



**Who are you?** Understanding the answer to that question is the key to being the best possible you! Welcome to Hyde, an independent college preparatory boarding and day school that puts you—and your character—first. We value effort over achievement, attitude over aptitude, and who you are over what you can do. Why? Because we want to develop in our students the character and confidence needed to truly succeed—not just in college, but in life. We’ll give you challenges you can handle, and then challenge you some more to make you stretch and grow. We’ll ask for your best all the time, and pretty soon you’ll start to demand it of yourself—academically, personally, socially, artistically, and athletically. **The fact is, when you put character first, everything else falls into place.**

“Coaches recognized my hard work on the sports field and began to expect that from me in my classes. I gained confidence in academics and I’m proud of what I achieved at Hyde.”

— Sam, Redding, CT



### As a Citizen

### Be The Best Possible You

Hyde understands that leadership comes from within, and helps students on the path to self-discovery.

[hyde.edu/leadership](http://hyde.edu/leadership)



# “Inner Leadership”



**Your success in life** is dependent upon the skills you possess in your inner core. What do you do when challenged? At Hyde, we will help you develop an understanding of yourself, give you the confidence to speak up, and teach you how to have grit and confidence when the going gets tough. We do this through a framework that we call **“Inner Leadership.”**

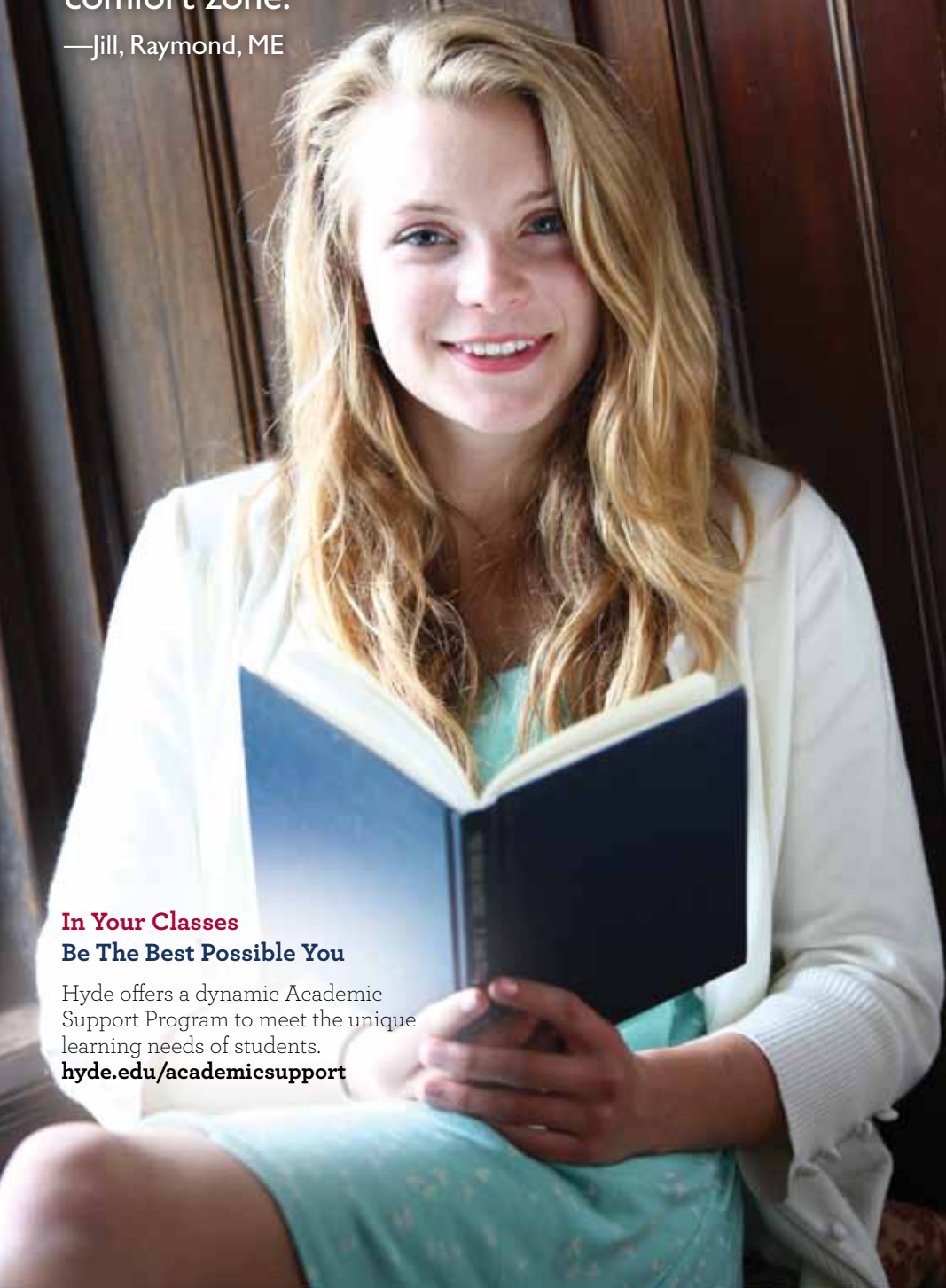
A student has developed their inner leadership when they

- have become self-aware
- have the confidence to speak in public
- are able to tackle challenges outside their comfort zone
- are able to have meaningful relationships
- understand their family’s strengths & challenges



“Before I came to Hyde I was shy and self-conscious. I could never have imagined giving a tour or getting on stage. Here, everyone gets out of their comfort zone.”

—Jill, Raymond, ME



**In Your Classes  
Be The Best Possible You**

Hyde offers a dynamic Academic Support Program to meet the unique learning needs of students.  
[hyde.edu/academicsupport](http://hyde.edu/academicsupport)

# Learning Across The Curriculum



## The Academic Foundation You Need

Hyde's college preparatory curriculum for students in grades 9–12 and postgraduates offers a range of academic options, including Advanced Placement, Honors, and Academic Support courses. In small classes—the average size is 12—Hyde's teachers seek to understand students as unique learners, every day asking the question, “What is the best that **you** can do?” Nurturing curiosity, persistence, and the capacity for deep reflection, Hyde also focuses on skill building across the curriculum. Ninety-eight percent of Hyde graduates attend a four-year college.



“We all know each other, and we learn how to help each other succeed. At Hyde, I’ve made some of the best friends I’ve ever had.”

— Nate, Alexandria, VA



**In Your Community  
Be The Best Possible You**

At Hyde, character is not an addition to the curriculum, it is the foundation.  
[hyde.edu/pride](http://hyde.edu/pride)

# Everyone Does Everything

## A Well-Rounded Experience

Hyde graduates are noted for their poise, self-assurance, and fearless willingness to embrace challenges of any kind. We think that’s because all students at Hyde are challenged to engage in community life and in a variety of learning experiences beyond the classroom. Every student plays sports for three seasons, participates in our performing arts program, does campus jobs as part of a student work crew, and interacts supportively with peers as part of a Discovery Group. One more thing: All graduating seniors write and deliver a brief speech at Commencement. Showcasing the individuality of each student, the speeches are a demonstration of authenticity, confidence, and accomplishment—the culmination of a Hyde education.



# A Day At Hyde

## Amelia, Hyde Senior

Students at Hyde are always on the go. The pace is fast but since we are all in it together, no one gets left behind.

I enjoy a challenging course load and lots of activities every day. Here's the inside scoop:



### 6:30 AM **Wake-Up**

I love starting my day bright and early with all my friends in the dorm, but you've got to love the later wake-up on Wednesdays and Saturdays too!

### 7:00 AM **Breakfast**

The omelettes made to order are delicious, and I always grab some fruit for a snack later on.

### 8:00 AM **Dorm Meeting**

It's important to check-in daily with the girls on my floor to see how we are all doing.

### 8:30-9:20 AM **English 12**

It's great being with all of my senior classmates in such an engaging, interactive and personal class. Who knew Faulkner could bring us closer together!

### 9:25-10:15 AM **AP Studio Art**

I'm still working on my portfolio, trying to let my inner Picasso shine!

### 10:20-11:10 AM **Multivariable Calculus**

Using real-world applications for derivatives and integers is super challenging.

### 11:15-12:05 PM **Ethics**

This class has moved me to reevaluate history, politics and my own sense of right and wrong...amazing!

### 12:00-12:45 PM **Lunch**

There are always lots of choices, but I am all about getting creative with the pannini machine!

### 1:30-2:20 PM **College Workshop**

Every senior has a full class period just about every day to meet with visiting admission officers from all kinds of great colleges and to work on our college applications.

### 2:25-3:15 PM **AP Physics: Mechanics**

My inner Einstein is conjured every day as I explore the Law of Conservation of Linear Momentum, and how just about everything works!

### 3:30 PM **Soccer Practice**

I love my teammates, and we pride ourselves on bringing our best effort and sportsmanship to every practice and every game.

### 5:45 PM **Dinner**

It's awesome spending time with the faculty and their families at dinner, and having the younger faculty children around always makes the dining hall feel like home!

After dinner I usually walk over to the coffee shop in town to grab a hot tea and some dessert before study hall.

### 7:30-9:30 PM **Study Hall**

Some quiet time when everyone on campus is studying really helps me manage my course load.



# Hyde is for Families

“Hyde School helped my son to be a better student with tremendous self-knowledge and inter-personal skills. What's more, Hyde's Family Program helped our whole family to communicate better and develop stronger relationships that will stay with us for life.”

— Rick Chesley, Partner DLA Piper, Chicago and member of the Hyde Board of Governors



## With Your Family Be The Best Possible You

Every Hyde family becomes part of a regional parent group.  
[hyde.edu/family](http://hyde.edu/family)

## Parents Get Involved

Who you are starts with where you come from. At Hyde, we realize that we can't fulfill our commitment to character education for our students without engaging in a positive partnership with their families. Hyde School helps parents help their kids develop the character they need to fulfill their unique potential. Providing parents with a supportive community of peers, Hyde's Family Program brings families into our collaborative learning experience. Only at Hyde does going to a boarding school mean your family will grow closer together.

# After Hyde

## College Acceptance

College counseling is a very personalized experience at Hyde, where we strive to find the very best match for our graduates. Here's a sampling of some of the schools our alumni have attended in recent years.

Bates College  
Boston College  
Bowdoin College  
Brandeis University  
University of California—  
Berkeley  
Carnegie Mellon University  
Clark University  
Connecticut College  
Davidson College  
Emory University  
Endicott College  
Fordham University  
Gettysburg College  
Lawrence University  
Kenyon College  
University of Michigan—  
Ann Arbor  
New York University  
Northwestern University  
University of Notre Dame  
University of Richmond  
Stanford University  
Syracuse University  
United States Military  
Academy at West Point  
Wheaton College  
Wake Forest University

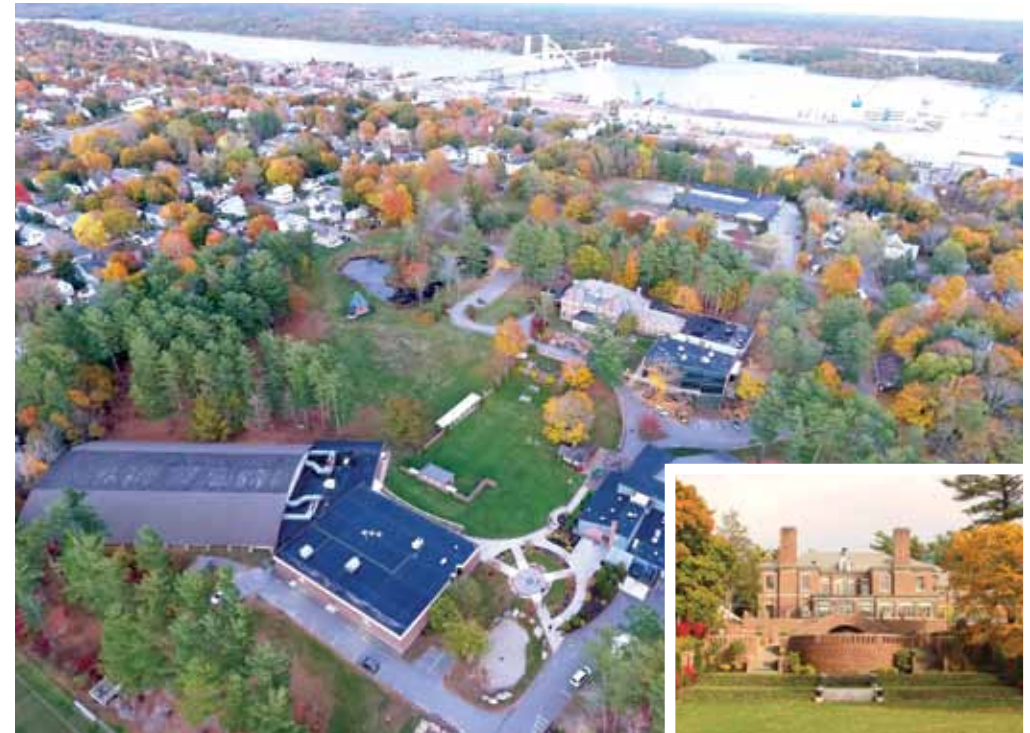


## When You Graduate Be The Best Possible You

98% of Hyde graduates are accepted to four-year colleges. [hyde.edu/college](http://hyde.edu/college)

# Bath, Maine, “A city on the edge of cool”\*

\*As stated in the Boston Globe, [hyde.edu/globe](http://hyde.edu/globe)



Situated on the site of the 145-acre estate of shipbuilder John S. Hyde.

Come tour:

- Hyde Mansion & Carriage House
- Athletic Center
- Student Life Center
- Spiritual Center
- Ropes Course
- Music Recording Studio
- Climbing Wall
- Cross Country Ski Trails
- Art Barn

Distance from:  
**Portland:** 34 miles  
**Boston:** 140 miles  
**New York:** 348 miles



# Let's Connect!



"I am so grateful for my experience here. Initially I wasn't sure about coming to a boarding school, but my relationships with friends and my family have never been better. Coming to Hyde was a game changer!"

— Bailey, Norwell, MA

## Take The First Step

The best way to understand fully Hyde's unique approach is to experience our school first-hand. The *Hyde Interview* is one of a kind; it's an open, honest conversation focused on three primary questions:

- Who am I?
- Where am I going?
- How am I going to get there?

## Contact us to schedule an interview or a visit today!

Hyde School Admission  
616 High Street  
Bath, ME 04530  
(207) 443-7101  
[comevisit@hyde.edu](mailto:comevisit@hyde.edu)

## Call, Click, E-mail

Visit [www.hyde.edu](http://www.hyde.edu) to:

- Take a virtual tour
- Watch videos
- Check out Hyde Sports teams
- See latest news from stage and studio
- Fill out an Inquiry Form
- Learn how to apply!

Design and Photography: © Peapod Design, New Canaan, CT / Copywriting: Leslie Virostek

